

PISTON OIL SEALED TYPE

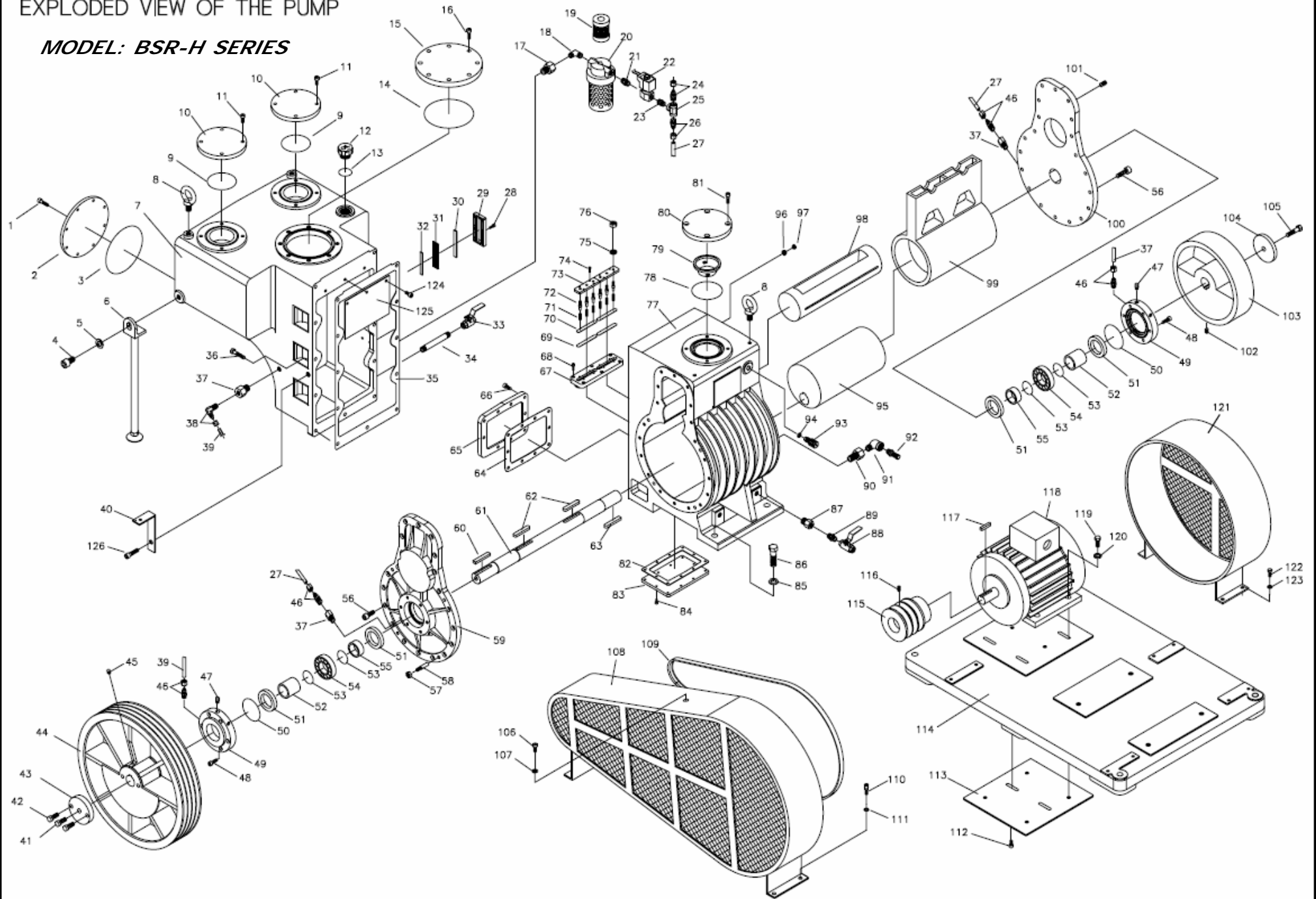
VACUUM PUMP PART LIST

BSR-H SERIES

BESTECH
VACUUM TECHNOLOGY

EXPLODED VIEW OF THE PUMP

MODEL: BSR-H SERIES



PART LIST OF OIL ROTARY VACUUM PUMP

NO	DESCRIPTION	MATERIALS	DIMENSIONS	NO. REQUIRED PER UNIT				REMARKS
				H1.5K	H2.5K	H4.5K	H7.5K	
1	Hex socket head cap screw	SCM435	M8×25	6		8		
2	Flange	SS41	Ø165×12	1				
			Ø200×12			1		
3	O-Ring	NBR	G125	1				
			AN259			1		
4	Hex socket head cap screw	SCM435	M12×25	1				
			M16×30			1		
5	Washer	S25C	Ø12	1				
			Ø16			1		
6	Level foot	SS41		1				
					1			
						1		
7	Oil reservoir tank	GC20	480×490×400	1				
			580×490×400		1			
			560×603×420			1		
			680×737×530				1	
8	Eye bolt	S25C	M12	4				
			M16			4		
9	O-Ring	NBR	V70	2				
			V100		2			
			V120				2	
10	Outlet flange	SS41	Ø120×12	2				
			Ø160×12		2			
			Ø185×12				2	
11	Hex socket head cap screw	SCM435	M8×25	8				

NO	DESCRIPTION	MATERIALS	DIMENSIONS	NO. REQUIRED PER UNIT				REMARKS
				H1.5K	H2.5K	H4.5K	H7.5K	
11	Hex socket head cap screw	SCM435	M10×25		8			
			M10×30				16	
12	Oil intake plug	KN333G30	PF1"		1			
13	O-Ring	NBR	P35		1			
14	O-Ring	NBR	AN266	1				
			AN270		1			
			AN271			1		
			AN274				1	
15	Flange	SS41	Ø242×12	1				
			Ø270×12		1			
			Ø280×12			1		
			Ø300×12				1	
16	Hex socket head cap screw	SCM435	M8×30	8		10		
17	Pipe nipple	SUS	PT 3/8×100	1				
			PT 3/8×70			1		
			PT 1/2×150				1	
18	Service elbow	Bs	PT 3/8	1				
			PT 1/2				1	
19	Filter element		Ø20×Ø38×30	1				
			Ø20×Ø38×80		1			
			Ø25×Ø52×53				1	
20	Oil Filter		1144-3C-E	1				
			1144-3C-EJ		1			
			1137-3C-E			1		
			1137-4C-E				1	

NO	DESCRIPTION	MATERIALS	DIMENSIONS	NO. REQUIRED PER UNIT				REMARKS
				H1.5K	H2.5K	H4.5K	H7.5K	
21	Nipple (Union PT)	Bs	PT 3/8	1				
	Elbow (Union PT)		PT 3/8		1			
			PT 1/2				1	
22	Solenoid valve		AV41-O3-3	1				
			AV41-O3-5		1			
			AV41-O3-7			1		
			AV41-O4-8				1	
23	Nipple (Union PT)	Bs	PT 3/8	1				
			PT 1/2×3/8				1	
24	Two Touch elbow	Bs	PT 3/8	1			1	
	Two Touch nipple					1		
25	Tee FxFxF (Nipple)	Bs	PT 3/8		1			
26	Two Touch elbow	Bs	PT 3/8		1			
27	Hose - Oil feed		Ø10		1			
28	Hex socket head cap screw	SCM435	M5×15		6			
29	Sight glass bezel	Aluminum	108×48×10		1			
30	Sight glass	Glass	91.5×19×3		1			
31	Sight glass seal	NBR	97×23.5×4.5		1			
32	Oil indicator	Aluminum	83×1		1			
33	Ball valve	Bs	PT 3/8	1				
			PT 1/2			1		
34	Pipe nipple	SUS	PT 3/8×100	1				
			PT 1/2×55			1		
			PT 1/2×150				1	
	Service elbow	Bs	PT 1/2		2			

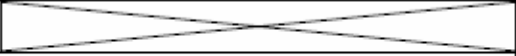
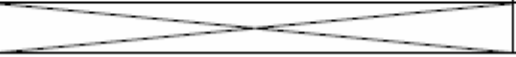
NO	DESCRIPTION	MATERIALS	DIMENSIONS	NO. REQUIRED PER UNIT				REMARKS
				H1.5K	H2.5K	H4.5K	H7.5K	
35	Oil reservoir tank gasket	5072S3	190×490×1	1				
			290×490×1		1			
			294×600×1			1		
			340×740×1				1	
36	Hex socket head cap screw	SCM435	M8×35	11				
			M10×40			11		
			M12×50				13	
37	Reducer	Bs	PT 1/4	1				
			PT 3/8			2		
38	Two touch elbow	Bs	PT 1/4		2			
39	Hose - Oil feed		Ø10		1			
40	Clamp	SS41	17×180	1				
			17×209			1		
			17×240				1	
41	Hex bolt	SCM435	M12×35		1			
42	Hex bolt	SCM435	M8×30	2				
			M12×30			2		
43	Fixed plate - Pump pulley	SS41	Ø74×16	1				
			Ø95×18			1		
			Ø115×18				1	
44	Pump pulley	GC20	Ø320×62	1				
			Ø430×85			1		
			Ø500×110					
45	Set screw	SCM435	M10×14		1			
			M12×14				1	

NO	DESCRIPTION	MATERIALS	DIMENSIONS	NO. REQUIRED PER UNIT				REMARKS
				H1.5K	H2.5K	H4.5K	H7.5K	
46	Two Touch Nipple	Bs	PT 1/4	2				
46-1	Two Touch elbow	Bs	PT 3/8	2				
47	Plug	Bs	PT 1/8	2				
48	Hex socket head cap screw	SCM435	M8×35	12				
49	Bearing cover (Front & Rear)	GC20	Ø124×27	2 (1EA)				
			Ø144×29			2 (1EA)		
			Ø156×29			2 (1EA)		
50	O - Ring	NBR	G85	2				
			G95			2		
			G115			2		
51	Oil seal	NBR	D45×62×11	4				
			D50×72×12			4		
			D60×82×12			4		
52	Oil Seal Sleeve (Large)	SCM4	Ø35×Ø45×29	2				
			Ø40×Ø50×30			2		
			Ø50×Ø60×30			2		
53	O - Ring	NBR	P35	4				
			P40			4		
			P50			4		
54	Bearing		6307	2				
			6308			2		
			6310			2		
55	Oil Seal Sleeve (Small)	SCM4	Ø35×Ø45×22	2				
			Ø40×Ø50×23			2		
			Ø50×Ø60×21			2		

NO	DESCRIPTION	MATERIALS	DIMENSIONS	NO. REQUIRED PER UNIT				REMARKS
				H1.5K	H2.5K	H4.5K	H7.5K	
56	Hex socket head cap screw	SCM435	M10×25	34				
			M10×30			40		
			M12×35				44	
57	Hex Nut	SS41	M10	6		8		
58	Pin(Male screw)	S45C	∅10×50-M10	6		8		
59	Front cover	GC25	435×280×38					
			530×350×38					
			655×420×37					
60	Key (Pump Pulley)	S45C	10×8×55-1R	1				
			12×8×69-1R			1		
			14×9×89-1R				1	
61	Shaft	SCM4	∅35×443	1				
			∅35×584		1			
			∅40×605			1		
			∅50×720				1	
62	Key (Rotor Eccenter)	S45C	10×8×99-2R	1				
			10×8×70-2R		2			
			12×8×70-2R			2		
			14×9×100-2R				2	
63	Key (Balance Wheel)	S45C	10×8×35-1R	1				
			10×8×69-1R		1			
			12×8×59-1R			1		
			14×9×90-1R				1	
64	Cooling cover gasket(Left)	5072S	116×140×1	1				
			216×140×1		1			

NO	DESCRIPTION	MATERIALS	DIMENSIONS	NO. REQUIRED PER UNIT				REMARKS
				H1.5K	H2.5K	H4.5K	H7.5K	
64	Cooling cover gasket(Left)	5072S	214×165×1			1		
			250×145×1				1	
65	Cooling cover (Left)	SS41	116×140×6	1				
			216×140×6		1			
			214×165×6			1		
			250×145×6				1	
66	Hex socket head cap screw	SCM435	M8×20	6	10		12	
67	Exhaust valve body	GC20	127×76×35	1				
			237×76×35		1			
			285×86×35				1	
68	Hex socket head cap screw	SCM435	M8×25	4	6			
69	Exhaust valve plate	7C27Mo2	105×18×0.8	1	2			
			128×18×0.8				2	
70	Exhaust valve plate	7C27Mo2	105×18×1.5	1	2			
			128×18×1.5				2	
71	Exhaust valve Spring	SUS304	∅15.2×30	3	6			
72	Exhaust Valve Guide Bolt	S45C	∅17×55	3	6			
73	Exhaust valve Fixed plate	SS41	111×40×10	1	2			
			134×40×10				2	
74	Hex socket head cap screw	SCM435	M6×20	4	8			
75	Spring washer	SCM435	∅10	3	6			
76	Hex nut	SCM435	M10	3	6			
77	Cylinder	GC25	320×495×200	1				
			320×495×300		1			
			408×615.5×300			1		

NO	DESCRIPTION	MATERIALS	DIMENSIONS	NO. REQUIRED PER UNIT				REMARKS
				H1.5K	H2.5K	H4.5K	H7.5K	
77	Cylinder	GC25	500×750×350				1	
78	O-ring	NBR	V70	1				
			V100		1			
			V120				1	
79	Dirt trap	SUS304	∅59×∅50×10	1				
			∅90×∅80×10		1			
			∅110×∅98×10				1	
80	Inlet Cover	SS41	∅120×12	1				
			∅160×12		1			
			∅185×12				1	
81	Hex socket head cap screw	SCM435	M8×25	4				
			M10×25		4		8	
82	Cooling cover gasket (Bottom)	5O72S	166×190×1	1				
			166×290×1		1			
			194×290×1			1		
			226×330×1				1	
83	Cooling cover (Bottom)	SS41	166×190×6	1				
			166×290×6		1			
			194×290×6			1		
			226×330×6				1	
84	Hex socket head cap screw	SCM435	M8×25	8	12			
			M8×35			12	16	
85	Washer	SS41	∅12		4			
			∅16				4	
86	Hex Bolt	S25C	M12×45		4			

NO	DESCRIPTION	MATERIALS	DIMENSIONS	NO. REQUIRED PER UNIT				REMARKS
				H1.5K	H2.5K	H4.5K	H7.5K	
86	Hex Bolt	S25C	M12×50			4		
			M16×60				4	
87	Reducer	Bs	PT3/8	2				
88	Ball valve	Bs	PT3/8	2				
89	Nipple(Union PT)	Bs	PT3/8	2			2	
	Pipe nipple	SUS				2		
90	Pipe nipple	Bs	PT3/8×100	1				
	Reducer		PT3/8				1	
91	Ball valve	Bs	PT3/8	1				
	Service elbow							1
92	Hose nipple	Bs	PT3/8				1	
93	Leak valve	Bs	Ø22×50	1				
94	Leak valve seat	Teflon	Ø6×Ø14×3	1				
95	Rotor - Eccenter	GC25	Ø115×200	1				
			Ø115×300		1			
			Ø153×296			1		
			Ø194×350					1
96	Spring	SUS304	Ø12.3×20	1				
97	Non-return valve	Viton	Ø12×7	1				
98	Slide pin	GC25	Ø100×263.5	1				
			Ø100×363.5		1			
			Ø100×363.5			1		
			Ø135×417.5					1
99	Slotter	GC25	Ø140×200	1				
			Ø140×300		1			

NO	DESCRIPTION	MATERIALS	DIMENSIONS	NO. REQUIRED PER UNIT				REMARKS
				H1.5K	H2.5K	H4.5K	H7.5K	
99	Slotter	GC25	Ø180×300			1		
			Ø225×350				1	
100	Rear cover	GC25	435×280×46	1				
			530×350×48			1		
			655×420×50				1	
101	Set screw	SCM435	PT3/8			1		
102	Set screw	SCM435	M10×14			1		
			M12×14				1	
103	Balance Wheel	GC20	Ø246×45	1				
			Ø246×86		1			
			Ø295×75			1		
			Ø550×110				1	
104	Fixed plate (Balance wheel)	SS41	Ø74×11		1			
			Ø95×12			1		
			Ø115×18				1	
105	Hex Bolt	SCM435	M12×35			1		
106	Hex bolt	S25C	M8×15			1		
107	Washer	SS41	Ø8			1		
108	Safety cover(Pump pulley)	SS41	704×355×110	1				
			848×230×135			1		
			1056×540×154				1	
109	V-belt		B-61"	3				
			B-62"		3			
			C-77"			3		
			C-94"				4	

NO	DESCRIPTION		MATERIALS	DIMENSIONS	NO. REQUIRED PER UNIT				REMARKS
					H1.5K	H2.5K	H4.5K	H7.5K	
110	Hex Bolt		S25C	M10×15	2				
111	Washer		SS41	Ø10	2				
112	Motor base guide Bolt		S25C	M10×38	2				
113	Motor base		SS41	230×180×12	1				
				230×180×12		1			
				256×210×12			1		
				294×242×12				1	
114	Pump base		GC25	785×520×50	1				
				785×655×50		1			
				1000×680×50			1		
				1235×800×65				1	
115	60Hz	Motor Pulley	GC20	Ø80×Ø28×102	1				
				Ø87×Ø28×102		1			
				Ø114×Ø38×105			1		
				Ø119×Ø42×110.5				1	
	50Hz			Ø93×Ø28×102	1				
				Ø102×Ø28×102		1			
				Ø134×Ø38×105			1		
				Ø140×Ø42×110.5				1	
116	Set screw		SCM435	M8×10	1		1		
117	Motor key		S45C	8×7×50	1				
				10×8×70			1		
				12×8×90				1	
118	Motor			2.2kW(3HP)	1				
				3.7kW(5HP)		1			

NO	DESCRIPTION	MATERIALS	DIMENSIONS	NO. REQUIRED PER UNIT				REMARKS
				H1.5K	H2.5K	H4.5K	H7.5K	
118	Motor		7.5kW(10HP)			1		
			11kW(15HP)				1	
119	Hex Bolt	S25C	M10×40		4			
			M12×50				4	
120	Washer	SS41	Ø10 (×2t)		4			
		SS41(1010)	Ø14 (×2.5t)				4	
121	Safety cover (Balance wheel)	SS41	276×323×80	1				
			276×323×121		1			
			370×410×120			1		
			542×535×158				1	
122	Hex Bolt	S25C	M10×15		4			
123	Washer	SS41	Ø10(×1.6t)		4			
124	Hex socket head cap screw	SCM435	M8×15	2		3		
125	Plate	SUS304	130×114×2.5t	1				
			214×130×2.5t			1		
			248×180×2.5t				1	
126	Hex socket head cap screw	SCM435	M8×15		1			
			M10×15				1	

